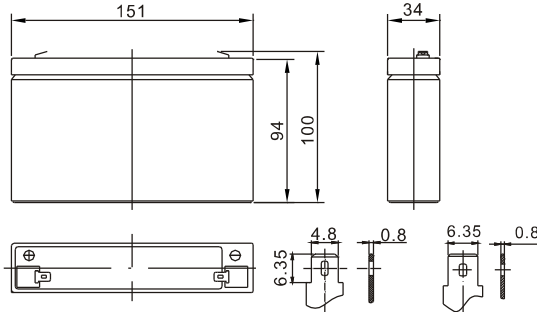


Standard Series BS6-9

6V 9Ah



Dimension(mm)



T1 T2
Terminal



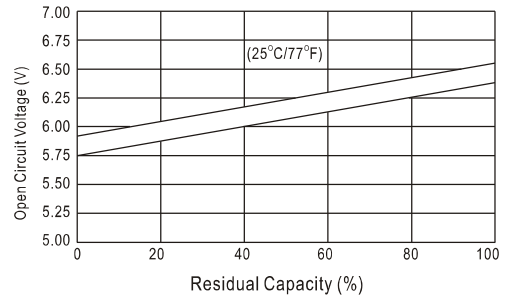
Specification

Nominal Voltage		6 V
Capacity(20HR, 25 °C)		9 Ah
Dimension	Length	151mm (5.94inch)
	Width	34mm (1.34inch)
	Height	94mm (3.70inch)
	Total Height	100mm (3.94inch)
Approx. Weight		1.35kg (2.87lbs)

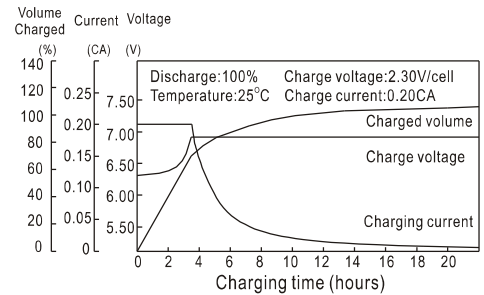
Characteristics

Capacity 20 (68H) To 1.70V/Cell	20 hour rate	Ah
	10 hour rate	8.5 Ah
	5 hour rate	7.85 Ah
	1 hour rate	6.19 Ah
	15 min rate	5 Ah
Internal resistance(Fully charged, 25 °C)		Approx. 15m
Capacity affected by temperature (20HR)	40	102%
	25	100%
	0	85%
	-15	65%
Self-discharge (25 °C)	3 month	Remaining Capacity: 91%
	6 month	Remaining Capacity: 82%
	12 month	Remaining Capacity: 65%
Nominal operating temperature		25 3 (77H 5H)
Operating temperature range		-15 ~50 (5H ~122H)
Float charging voltage(25 °C)		6.80 to 6.90V
Cyclic charging voltage(25 °C)		7.25 to 7.45V
Maximum charging current		2.16A
Terminal material		Copper
Maximum discharge current		108A(5 Sec.)

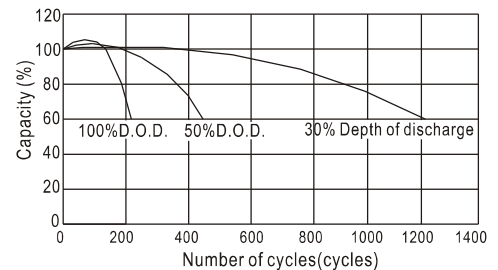
The Relationship for Open Circuit Voltage and Residual Capacity (25°C)



Charging Characteristics(25°C)



Cycle Life(25°C)



Constant Current Discharge Characteristics (A, 25°C)

F.V/TIME	5min	10min	15min	30min	60min	3h	5h	10h	20h
4.80V	33.0	21.5	16.0	9.35	5.50	2.13	1.36	0.77	0.41
5.10V	31.4	20.4	15.4	8.98	5.28	2.10	1.34	0.76	0.40
5.40V	29.5	19.2	14.6	8.53	5.02	2.06	1.31	0.76	0.40

Constant Power Discharge Characteristics (Watt, 25°C)

	5min	10min	15min	30min	60min	3h	5h	10h	20h
184	184	121	91.2	53.6	31.8	12.7	8.12	4.63	2.44
175	175	115	87.6	51.4	30.6	12.5	8.00	4.59	2.41
164	164	108	83.2	48.9	29.0	12.2	7.84	4.59	2.40

