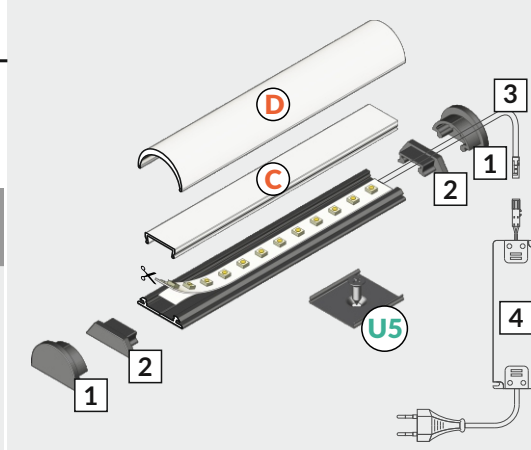
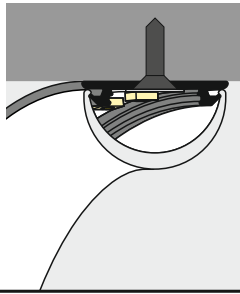
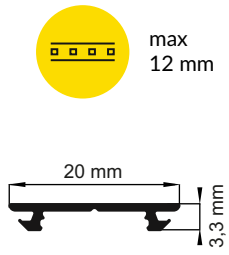


SPECIAL APPLICATION PROFILE



pliers



hacksaw



soldering iron



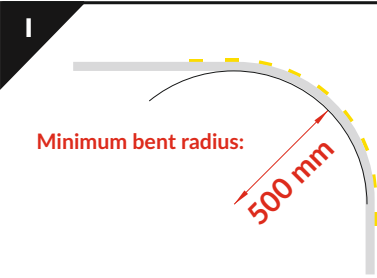
solder



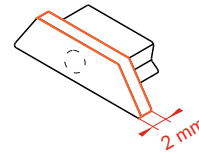
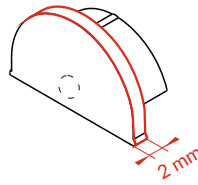
drill



screwdriver

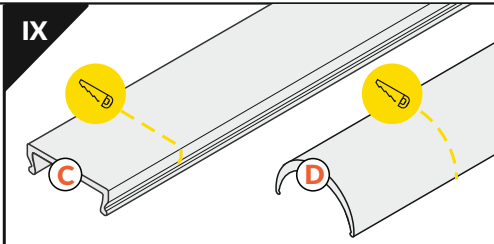
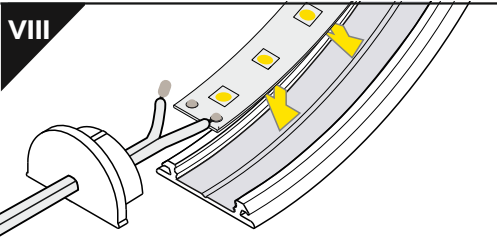
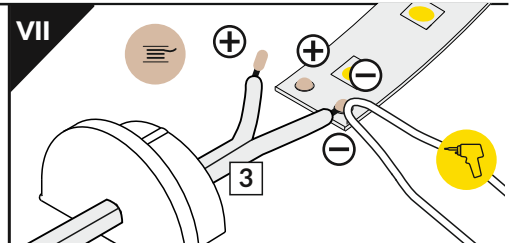
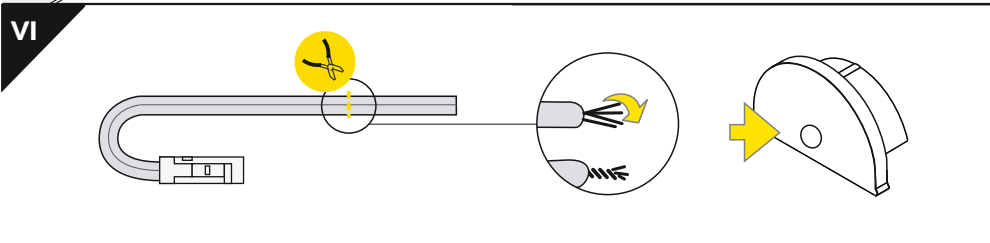
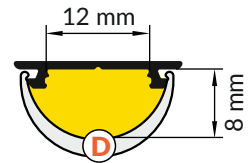
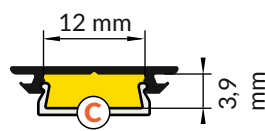
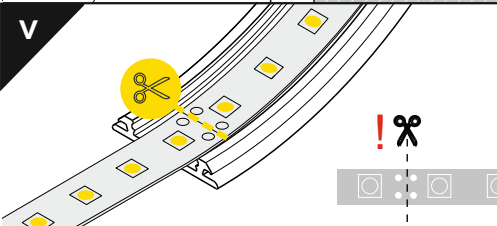
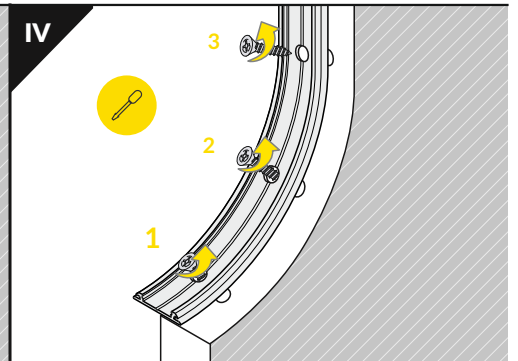
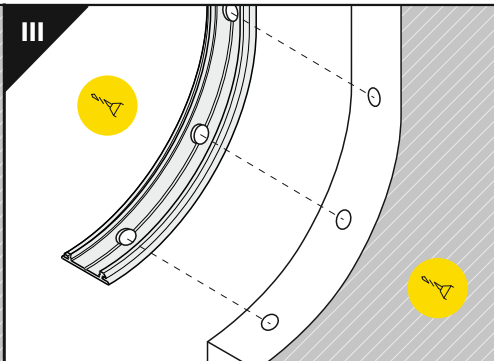
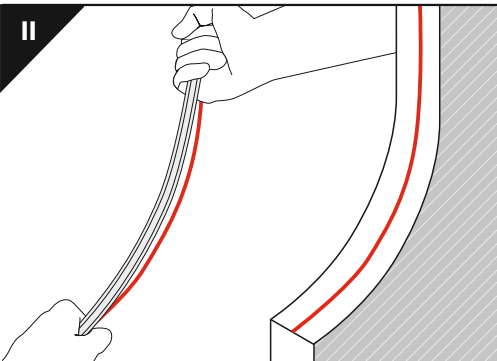


Note! When bending to the outside (picture on the left), the needed length of the cover is greater than the length of the profile.

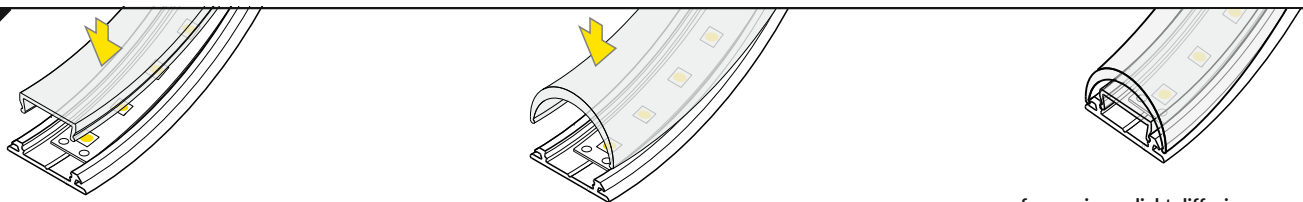


Note! Endings with marked space to bore a hole.

Note! Ending thickness increases the length of the luminaire



VI

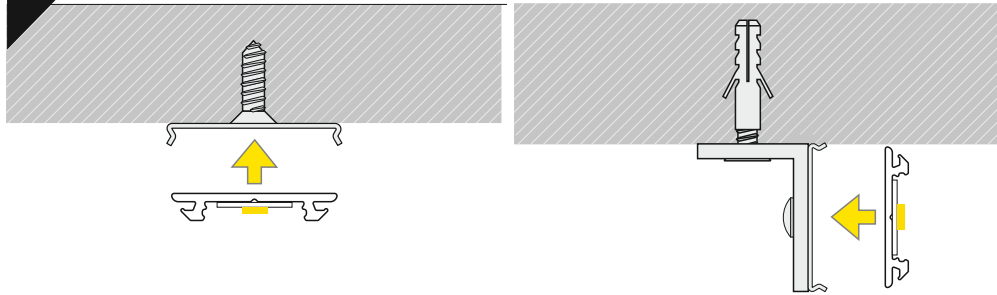


C click cover

D slide cover

C + D for maximum light diffusion

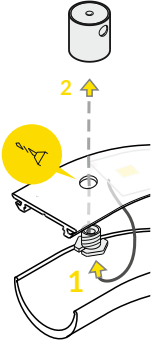
VII MOUNTING



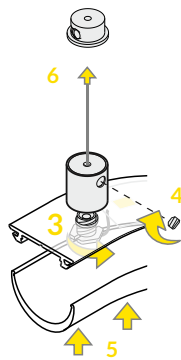
50 V 1500

sling + LED power supply housing

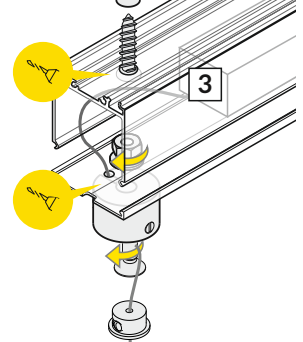
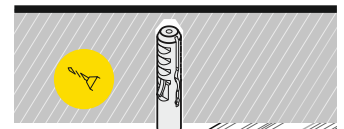
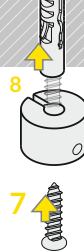
I



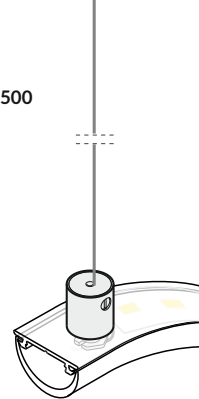
II



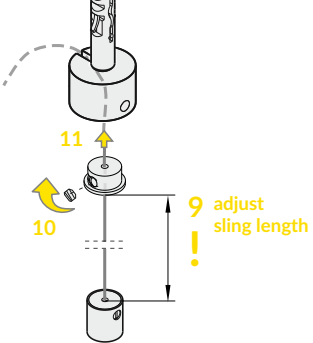
III



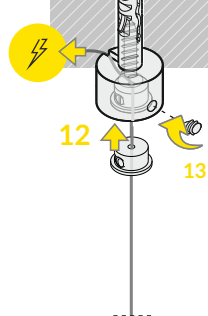
50 V 1500



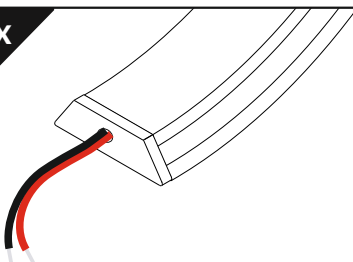
IV



V

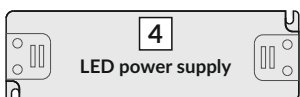


IX



12V/24V

230V



ACCESSORIES

- power switches
- controller + remote
- movement sensors