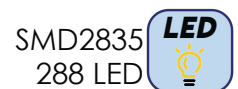
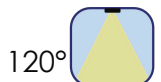
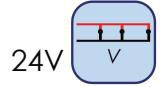
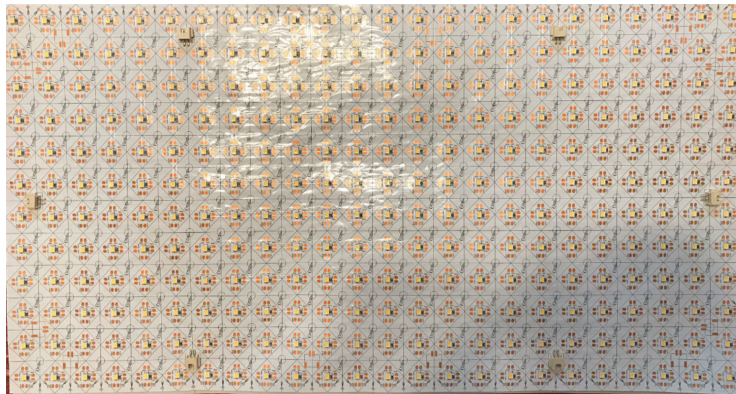


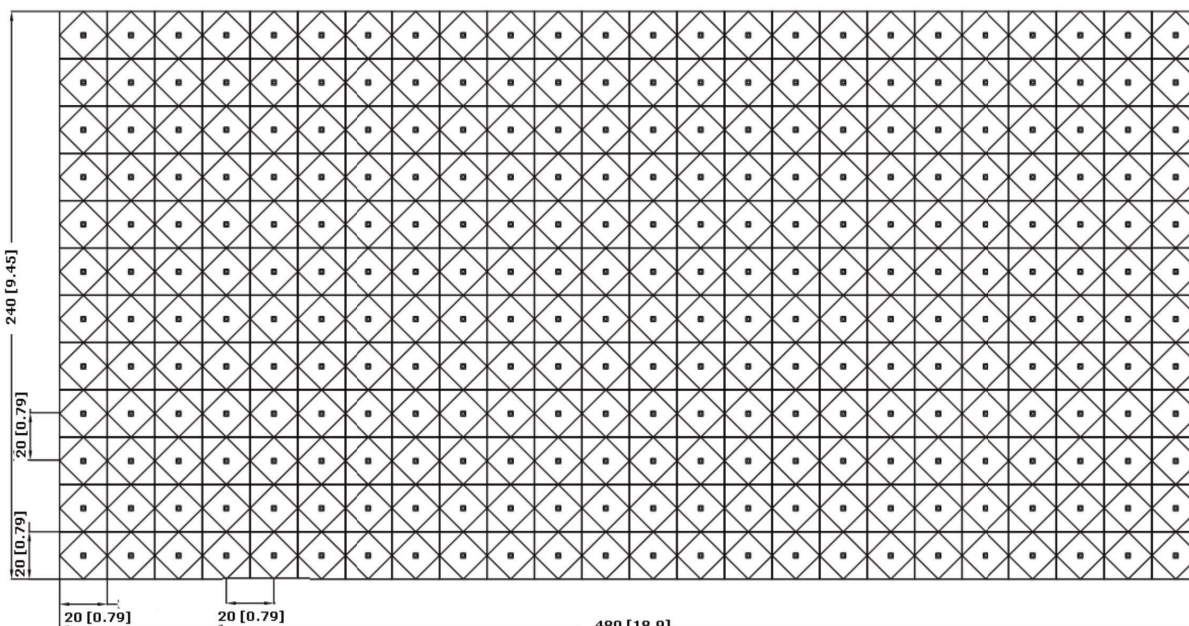
# FOGLIO LED FLESSIBILE IP20 BACKLIGHT

## 480x240mm - Ideale per la retroilluminazione



CODICE	PARAMETRI BASE				PARAMETRI FOTOMETRICI				
	Misure	Unità di Taglio	Input Volt	Watt nominali	CRI	Colore Luce	Lumen nominali	Max. Fogli collegabili	IP
AV6178NIAA	480x240x1mm	Ogni chip 20x20mm	24VDC	10W	≥80	4000K	1190LM/Foglio	23pz	IP20
AV6045WIAA	480x240x1mm	Ogni chip 20x20mm	24VDC	10W	≥80	2700K	1190LM/Foglio	23pz	IP20
AV6123NIAA	480x240x1mm	Ogni chip 20x20mm	24VDC	30W	≥80	4000K	3450LM/Foglio	7pz	IP20
AV6047WIAA	480x240x1mm	Ogni chip 20x20mm	24VDC	30W	≥80	2700K	3450LM/Foglio	7pz	IP20

unit: mm [in.]

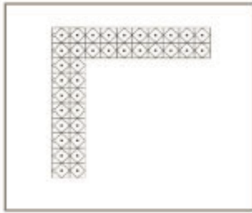


Unit: mm [in.]

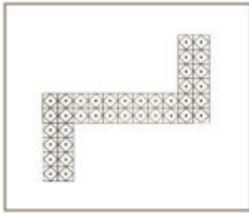
1 [0.04]



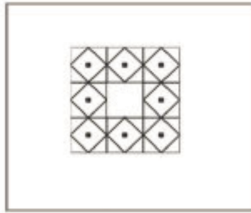
Possibilità di creare varie forme:



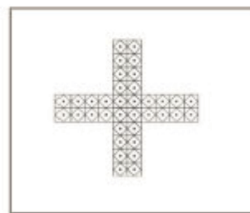
Forma ad "L"



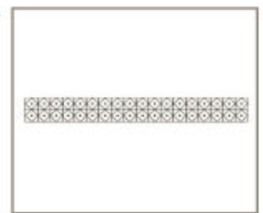
Forma a "S"



Forma quadrata



Forma a croce



Linea retta

