



Anti-glare RGB+CCT LED Downlight

Model No.: FUT072

Codice: AV5532XIAA

Features



Deepen the cover
Prevent glare effectively



RGB+CCT
16 Millions of colors to choose



Color temperature
2700~6500K



Dimmable
Saturation control



2.4G RF wireless transmission
technology



Signal transmitting &
Modes synchronization



Remote control
Control distance 30m



Smartphone APP control
(2.4GHz gateway is needed)



Support third party voice control
(2.4GHz gateway is needed)

18W Anti-glare RGB+CCT LED Downlight

Model No.: FUT072 / AV5532XIAA

Input Voltage: AC100~240V 50/60Hz

Power: 18W

Working Temp.: -20~60°C

CRI: >80 PF: >0.5

Color Temperature: 2700K~6500K

Luminous Flux: 1200LM

Lifespan: 50000 hours

Beam Angle: 60°

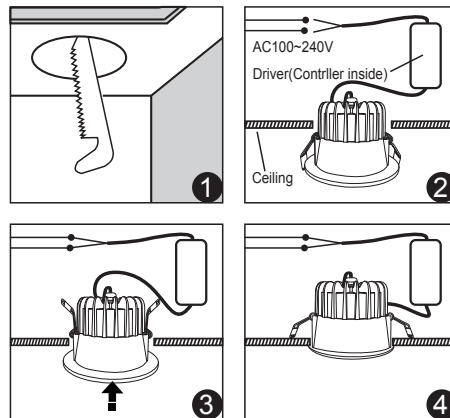
RF: 2.4GHz

Control Distance: 30m



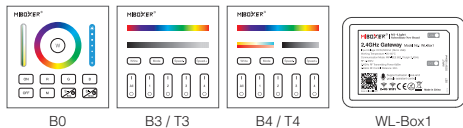
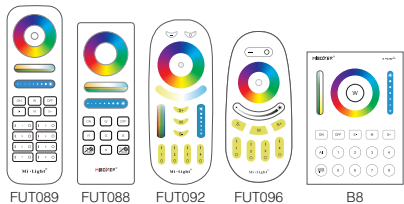
Instructions

1. Please open the hole on the ceiling according to the correct size of Diagram 1.
2. Connect the driver properly according to the wire connection Diagram 2. And then put the driver and wire into the ceiling from the hole.
3. Push in the two spring elements, make sure that they are deployed and anchored on the back of the ceiling Diagram 3 and 4.



Link / Unlink

Compatible with these remote controls
(Purchase separately)



NOTE:

Light will work after linking with remote control;
for more details, pls read the remote instruction.

Dynamic Mode Sheet

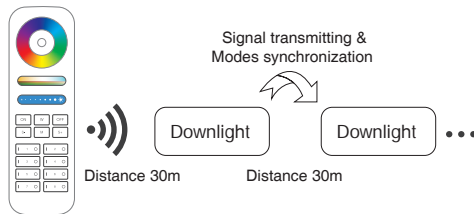
Number	Dynamic Mode	Brightness / Saturation / Speed
1	Mardi Gras	Adjustable
2	Automatic color change	
3	Sam	
4	Gemstone	
5	Twilight	
6	American	
7	Fat Tuesday	
8	Party	
9	Slow Color Splash	

Signal transmitting

One Downlight can transmit the signals from the remote control to another Downlight within 30m, as long as there is a Downlight within 30m, the remote control distance can be limitless.

Modes synchronization

Different Downlight can work synchronously when they are started at different times, controlled by the same remote, under same dynamic mode and within 30m distance.



Attention

1. When install the lighting fixtures, pls switch off the power to make sure the safety.
2. Please check whether the input voltage supply is in accordance with the lighting fixtures.
3. Non-professional user cannot dismantle the lighting fixtures directly, otherwise, it may cause fire and electric shock.
4. Please do not use lighting fixtures around the mental area and high magnetic field, otherwise, it will badly affect the control distance.



Made in China