

# DIMENSIONI: 280x100mm

## Mi·Light® User Instruction Codice:

**AV2363XIAA**

### Smart Panel Remote Controller Model No.: i1 / i2 / i3 / i4

## 1. Product Features

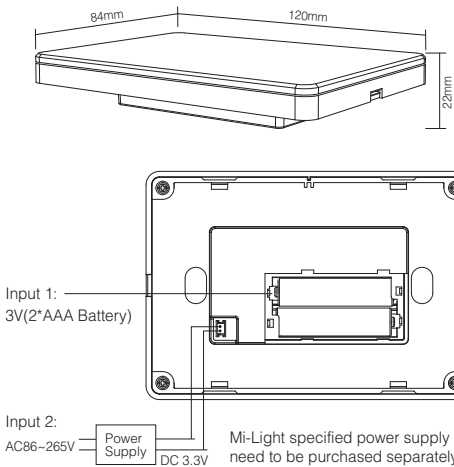
Smart Panel Remote controller is designed by a delicate and fashionable tempered glass panel; And we adopt a high precision Capacitive touch screen IC. Touch Screen is very stable; 2.4GHz high RF wireless control with long distance controlling, low power consumption and high speed transmitting rate.

Panel Remote Controller Name	Same Function Remote Model	Compatible products
Model No.: i1 4-Zone Brightness Dimming Panel Remote Controller	FUT091	Brightness dimming series
Model No.: i2 4-Zone CCT Adjust Panel Remote Controller	FUT091	CCT adjust series
Model No.: i3 4-Zone RGB/RGBW Panel Remote Controller	FUT095/FUT096	RGB / RGBW series
Model No.: i4 4-Zone RGB+CCT Panel Remote Controller	FUT092	RGB / RGBW RGB+CCT series

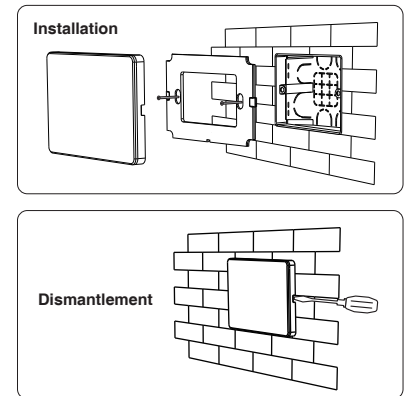
## 2. Technical Parameters

Input Voltage: 3V(2\*AAA Battery)/DC 3.3V  
Working Temperature: -20~60°C  
Radio Frequency: 2400~2483.5MHz  
Modulation Method: GFSK

Transmitting Power: 6dBm  
Control Distance: 30m  
Standby Power: 20uA



## 3. Installation/ Dismantlement



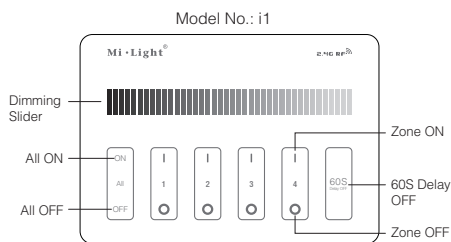
## 4. Attention

- Please check the cable, and make the circuit is correct before power on.
- When installation, pls handle with care to avoid the broken of the glass panel.



## 5. Function of keys

**Remark:** When touching the button, LED indicating lamp will flash once with different sound(Touch slider with no sound).

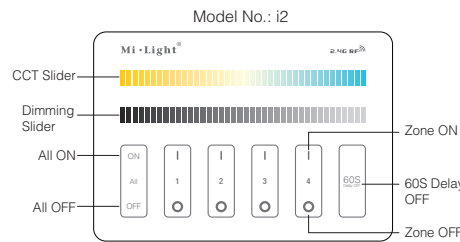


- Touch Dimming Slider to change the brightness from 1~100%.
- ON Touch Master ON, Turn on all linked lights. Long press 5 seconds to turn ON the indicating sound.
- 60S When the light is ON, press "60S Delay OFF", the light will be OFF Automatically after 60 seconds.
- OFF Touch Master OFF, Turn off all linked lights. Long press 5 seconds to turn OFF the indicating sound.
- Touch Zone ON, Turn on zone-linked lights.
- Touch Zone OFF, Turn off zone-linked lights.

### Link / Unlink

**Link:** First power off, then power on, within 3 seconds touch any of the Zone ' | ' button 3 times shortly, the link is done when you see the light blinks 3 times, otherwise try again later.

**Unlink:** First power off, then power on, within 3 seconds touch the linked Zone ' | ' button or the Master ' | ' button 5 times shortly, the unlink is done when you see the light blinks 9 times, otherwise try again later.

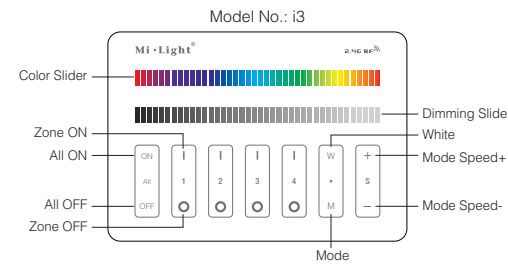


- Touch the slider to change color temperature.
- Touch Dimming Slider to change the brightness from 1~100%.
- ON Touch Master ON, Turn on all linked lights. Long press 5 seconds to turn ON the indicating sound.
- 60S When the light is ON, press "60S Delay OFF", the light will be OFF Automatically after 60 seconds.
- OFF Touch Master OFF, Turn off all linked lights. Long press 5 seconds to turn OFF the indicating sound.
- Touch Zone ON, Turn on zone-linked lights.
- Touch Zone OFF, Turn off zone-linked lights.

### Link / Unlink

**Link:** First power off, then power on, within 3 seconds touch any of the Zone ' | ' button 3 times shortly, the link is done when you see the light blinks 3 times, otherwise try again later.

**Unlink:** First power off, then power on, within 3 seconds touch the linked Zone ' | ' button or the Master ' | ' button 5 times shortly, the unlink is done when you see the light blinks 9 times, otherwise try again later.

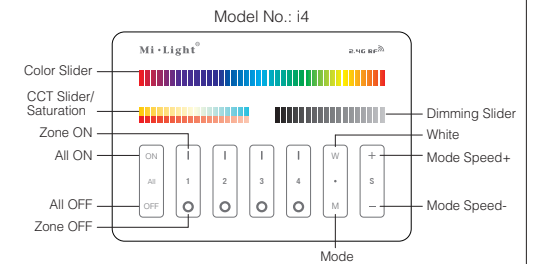


- Touch Color Slider, Choose the color you want.
- Touch Dimming Slider to change the brightness from 1~100%.
- White Touch White button to white light mode.
- Mode Switching Modes.
- Speed- Slow the speed on present dynamic mode.
- Speed+ Accelerate the speed on present dynamic mode.
- ON Touch Master ON, Turn on all linked lights. Long press 5 seconds to turn ON the indicating sound.
- OFF Touch Master OFF, Turn off all linked lights. Long press 5 seconds to turn OFF the indicating sound.
- Touch Zone ON, Turn on zone-linked lights.
- Touch Zone OFF, Turn off zone-linked lights.

### Link / Unlink

**Link:** First power off, then power on, within 3 seconds touch any of the Zone ' | ' button 1 time shortly, the link is done when you see the light blinks 3 times, otherwise try again later.

**Unlink:** First power off, then power on, within 3 seconds, long press the Zone ' | ' button or the Master ' | ' button, the unlink is done when you see the light blinks 9 times, otherwise try again later.



- Touch Color Slider, Choose the color you want.
- Under white light mode, touch the slider to change color temperature; Under color mode, touch the slider to change the saturation.
- Touch Dimming Slider to change the brightness from 1~100%.
- White Touch White button to white light mode.
- Mode Switching Modes.
- Speed- Slow the speed on present dynamic mode.
- Speed+ Accelerate the speed on present dynamic mode.
- ON Touch Master ON, Turn on all linked lights. Long press 5 seconds to turn ON the indicating sound.
- OFF Touch Master OFF, Turn off all linked lights. Long press 5 seconds to turn OFF the indicating sound.
- Touch Zone ON, Turn on zone-linked lights.
- Touch Zone OFF, Turn off zone-linked lights.

### Link / Unlink

**Link:** First power off, then power on, within 3 seconds touch any of the Zone ' | ' button 3 times shortly, the link is done when you see the light blinks 3 times with green color, otherwise try again later.

**Unlink:** First power off, then power on, within 3 seconds touch the linked Zone ' | ' button or the Master ' | ' button 5 times shortly, the unlink is done when you see the light blinks 10 times with red color, otherwise try again later.