

FLEX NEON 1212 DOME

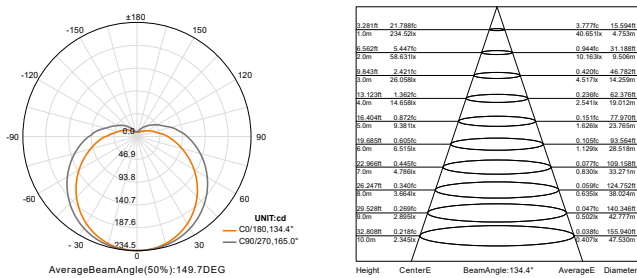


1212D Triple

TOP | 12*12mm | 150° | Dome | IP67



Photometrics



Electrical & Mechanical Technical Data

Bend	Top
Process	Extrusion
Finishing	Matt / Glossy
Diffuser shape	Dome
IP Rating	IP67
Cable Entry	Top / Bottom
Size	12*12mm
Length	5m / 10m / 20m / 30m

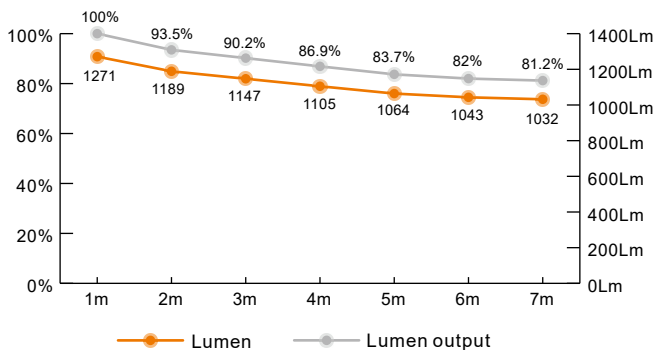
CCT/Color Option	White / TW / RGB / RGBW / Pixel RGB
CRI	Ra80+, Ra90+, Ra95+
Power	14.4W/m 19.2W/m 27W/m
Voltage	24V DC / 48V DC
Dimming Protocol	PWM, TRIAC, 0-10V, SPI
Lifetime	L70B50 50.000 h

Photometric	150° beam angle
Bend Radius	R>60mm

Temperature	Tc max <75°C (167°F)
Operating Temp.	-25°C...+50°C (-13°F...122°F)

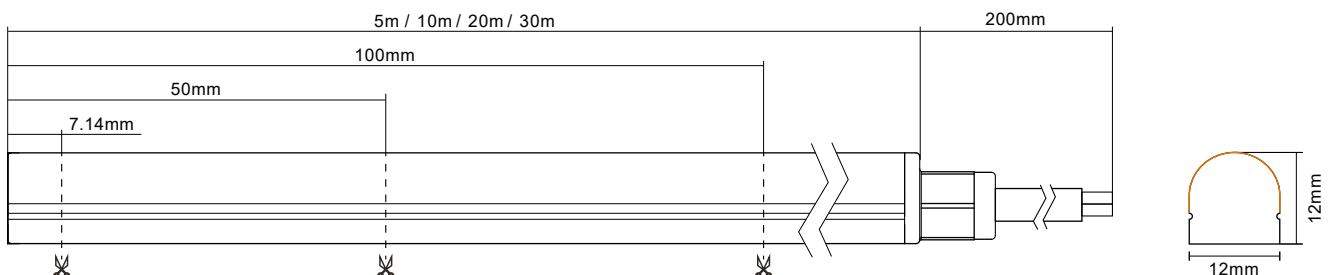
Weight	1.07 kg (5000mm)
Mounting	VHB Adhesive / Bracket / Channel

Lumen output VSMaxrun 7m @ 14.4W 3000K Ra90



* The above photometric and MAXRUN parameters are applicable only to 24V14.4W/m 3000KRa90.
 * If you have any MAXRUN questions about other product lines, please consult our company's sales representative.

Dimensions



* For specific cutting dimensions of different product series, please refer to the Light Technical Data.

FLEX NEON 1212 DOME



Light Technical Data

Type	Product Code	CCT/Color	CRI	Voltage	Cut Length	Lumen	
White Ra90+ 	1212 DOME	2700K	Ra90+	24VDC	50mm	1132Lm/m	
	1212 DOME	3000K	Ra90+	24VDC	50mm	1271Lm/m	
	14.4W/m	1212 DOME	3500K	Ra90+	24VDC	50mm	1282Lm/m
		1212 DOME	4000K	Ra90+	24VDC	50mm	1300Lm/m
		1212 DOME	5000K	Ra90+	24VDC	50mm	1325Lm/m
		1212 DOME	5700K	Ra90+	24VDC	50mm	1342Lm/m
		1212 DOME	2700K	Ra90+	24VDC	50mm	1488Lm/m
	19.2W/m	1212 DOME	3000K	Ra90+	24VDC	50mm	1555Lm/m
		1212 DOME	3500K	Ra90+	24VDC	50mm	1663Lm/m
		1212 DOME	4000K	Ra90+	24VDC	50mm	1701Lm/m
		1212 DOME	5000K	Ra90+	24VDC	50mm	1708Lm/m
		1212 DOME	5700K	Ra90+	24VDC	50mm	1732Lm/m
	14.4W/m 48VDC	1212 DOME	2700K	Ra90+	48VDC	100mm	1120Lm/m
		1212 DOME	3000K	Ra90+	48VDC	100mm	1188Lm/m
		1212 DOME	3500K	Ra90+	48VDC	100mm	1267Lm/m
		1212 DOME	4000K	Ra90+	48VDC	100mm	1303Lm/m
		1212 DOME	5000K	Ra90+	48VDC	100mm	1323Lm/m
		1212 DOME	5700K	Ra90+	48VDC	100mm	1339Lm/m
High CRI Ra95+ 	1212 DOME	2700K	Ra95+	24VDC	50mm	995Lm/m	
	1212 DOME	3000K	Ra95+	24VDC	50mm	1074Lm/m	
	14.4W/m	1212 DOME	3500K	Ra95+	24VDC	50mm	1170Lm/m
		1212 DOME	4000K	Ra95+	24VDC	50mm	1209Lm/m
		1212 DOME	5000K	Ra95+	24VDC	50mm	1238Lm/m
		1212 DOME	5700K	Ra95+	24VDC	50mm	1274Lm/m
MiniCut 7.14mm	1212 DOME 1CUT 7MM	2700K	Ra90+	24VDC	7.14mm	1074Lm/m	
	1212 DOME 1CUT 7MM	3000K	Ra90+	24VDC	7.14mm	1152Lm/m	
	14.4W/m	1212 DOME 1CUT 7MM	3500K	Ra90+	24VDC	7.14mm	1250Lm/m
		1212 DOME 1CUT 7MM	4000K	Ra90+	24VDC	7.14mm	1272Lm/m
		1212 DOME 1CUT 7MM	5000K	Ra90+	24VDC	7.14mm	1296Lm/m
		1212 DOME 1CUT 7MM	5700K	Ra90+	24VDC	7.14mm	1328Lm/m
High Efficacy 120Lm/w	1212 DOME HIGH LUMEN	2700K	Ra80+	24VDC	50mm	1454Lm/m	
	1212 DOME HIGH LUMEN	3000K	Ra80+	24VDC	50mm	1540Lm/m	
	14.4W/m	1212 DOME HIGH LUMEN	3500K	Ra80+	24VDC	50mm	1627Lm/m
		1212 DOME HIGH LUMEN	4000K	Ra80+	24VDC	50mm	1670Lm/m
		1212 DOME HIGH LUMEN	5000K	Ra80+	24VDC	50mm	1728Lm/m
		1212 DOME HIGH LUMEN	5700K	Ra80+	24VDC	50mm	1756Lm/m
Stabilized Current	1212 DOME CC	2700K	Ra90+	24VDC	50mm	1057Lm/m	
	1212 DOME CC	3000K	Ra90+	24VDC	50mm	1136Lm/m	
	14.4W/m	1212 DOME CC	3500K	Ra90+	24VDC	50mm	1209Lm/m
		1212 DOME CC	4000K	Ra90+	24VDC	50mm	1278Lm/m
		1212 DOME CC	5000K	Ra90+	24VDC	50mm	1290Lm/m
		1212 DOME CC	5700K	Ra90+	24VDC	50mm	1300Lm/m
Tunable White	14.4W/m	1212 DOME CCT VARIABLE	2700K+5700K	Ra90+	24VDC	50mm	1198Lm/m
	19.2W/m	1212 DOME CCT VARIABLE	2700K+5700K	Ra90+	24VDC	50mm	1597Lm/m
RGB	14.4W/m	1212 DOME RGB	RGB	-	24VDC	50mm	518Lm/m
RGBW	19.2W/m	1212 DOME RGBW	RGBW	Ra90+	24VDC	50mm	576Lm/m
Pixel RGB 20Pixels/m	27W/m	1212 DOME DIGITAL RGB	Pixel RGB	-	24VDC	50mm	813Lm/m

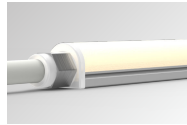
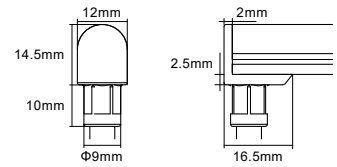
FLEX NEON 1212 DOME



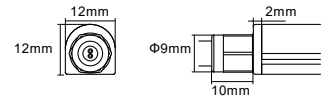
Molding Cable Directions



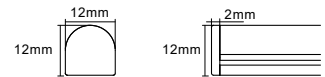
Bottom Entry (IP67)
 Dimensions: 12x24.5mm
 Material: Silicone



Top Entry (IP67)
 Dimensions: 12x12mm
 Material: Silicone



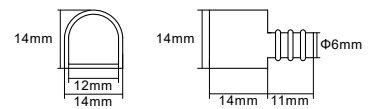
End Cap (IP67)
 Dimensions: 12x12mm
 Material: Silicone



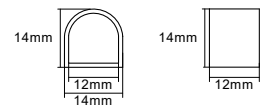
Sealed Caps



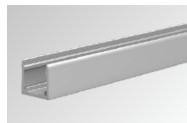
Cable Cap
 Dimensions: 14x14x25mm
 Material: Silicone



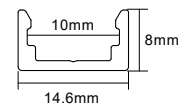
End Cap
 Dimensions: 14x14x12mm
 Material: Silicone



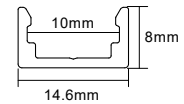
Mounting



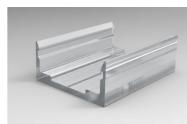
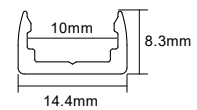
Aluminum Mounting Channel
 Dimensions: 14.6x8x1000mm
 Screw hole: Two hole, Φ 4mm
 Material: Aluminium



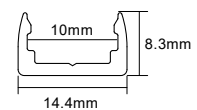
Aluminum Clip
 Dimensions: 14.6x8x30mm
 Screw hole: One hole, Φ 4mm
 Material: Aluminium



PC Channel
 Dimensions: 14.4x8.3x1000mm
 Screw hole: Two hole, Φ 4mm
 Material: Plastic



PC Clip
 Dimensions: 14.4x8.3x1000mm
 Screw hole: One hole, Φ 4mm
 Material: Plastic



Connectors & Wires



Silicone Wire

- ② 2PIN 20AWG wire, $\Phi=6\text{mm}$, $L=200\text{mm}$, 300V, $-60^{\circ}\text{C}\sim 200^{\circ}\text{C}$, V-0
- ③ 3PIN 20AWG wire, $\Phi=6\text{mm}$, $L=200\text{mm}$, 300V, $-60^{\circ}\text{C}\sim 200^{\circ}\text{C}$, V-0
- ④ 4PIN 20AWG wire, $\Phi=6\text{mm}$, $L=200\text{mm}$, 300V, $-60^{\circ}\text{C}\sim 200^{\circ}\text{C}$, V-0
- ⑤ 5PIN 22AWG wire, $\Phi=6\text{mm}$, $L=200\text{mm}$, 300V, $-60^{\circ}\text{C}\sim 200^{\circ}\text{C}$, V-0



IP68 Waterproof Connector(M20)

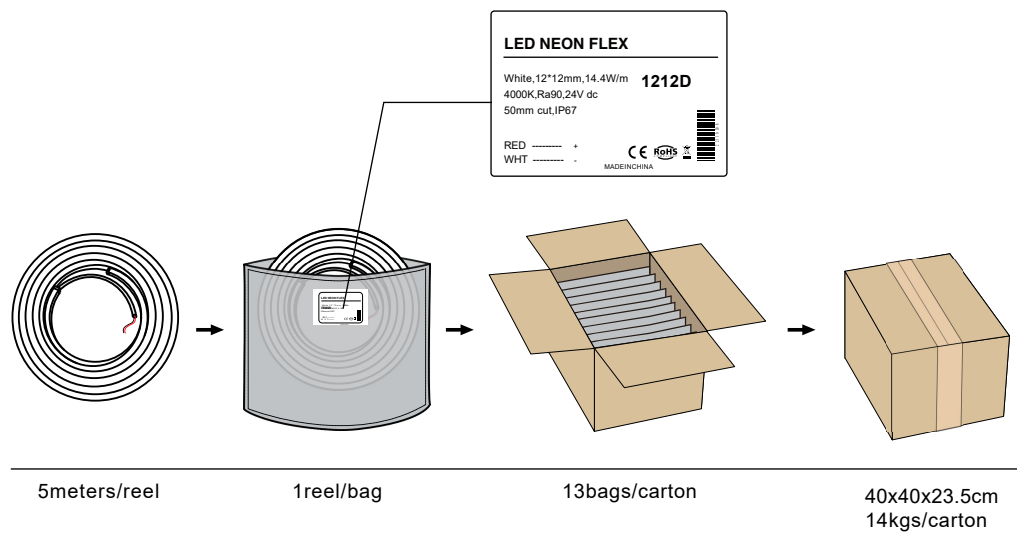
- ② 2PIN screw crimping, 500V, $-25^{\circ}\text{C}\sim 105^{\circ}\text{C}$, V-0
- ③ 3PIN screw crimping, 500V, $-25^{\circ}\text{C}\sim 105^{\circ}\text{C}$, V-0
- ④ 4PIN screw crimping, 500V, $-25^{\circ}\text{C}\sim 105^{\circ}\text{C}$, V-0
- ⑤ 5PIN screw crimping, 500V, $-25^{\circ}\text{C}\sim 105^{\circ}\text{C}$, V-0



IP66 Waterproof Connector With Wire(M12)

- ② 2PIN 20AWG wire, $\Phi=6\text{mm}$, $L=200\text{mm}$, 300V, $-25^{\circ}\text{C}\sim 105^{\circ}\text{C}$, V-0
- ③ 3PIN 20AWG wire, $\Phi=6\text{mm}$, $L=200\text{mm}$, 300V, $-25^{\circ}\text{C}\sim 105^{\circ}\text{C}$, V-0
- ④ 4PIN 20AWG wire, $\Phi=6\text{mm}$, $L=200\text{mm}$, 300V, $-25^{\circ}\text{C}\sim 105^{\circ}\text{C}$, V-0
- ⑤ 5PIN 22AWG wire, $\Phi=6\text{mm}$, $L=200\text{mm}$, 300V, $-25^{\circ}\text{C}\sim 105^{\circ}\text{C}$, V-0

Packing



Warning



- Product installation must be carried out by a qualified professional.
- Before installing make sure, that electrical power is turned OFF.
- Before installing make sure, that the fixing area can bear the total weight of the luminaire.
- Pay attention to polarity when connecting (installing) the product.
- Do not operate if the luminaire has been damaged.
- To protect the surface from dirt and fingerprints, we recommend the use of protective gloves during installation.
- Product warranty does not cover any damage caused by faulty installation and/or misuse.
- For further information, please contact the manufacturer.