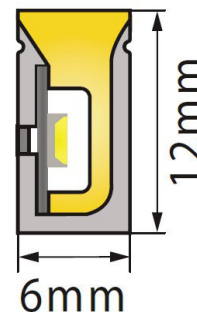
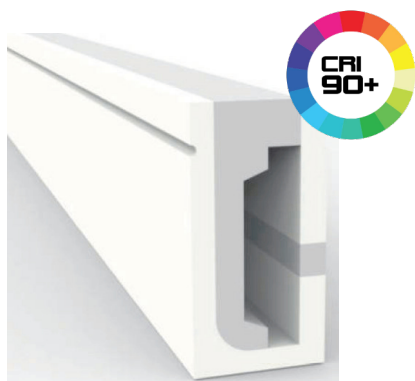
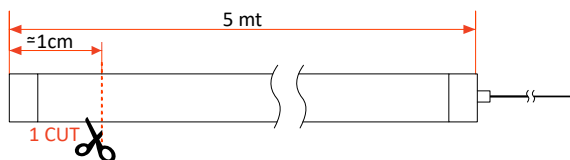


FLEX NEON 0612 FLAT 24V IP67 1 CUT

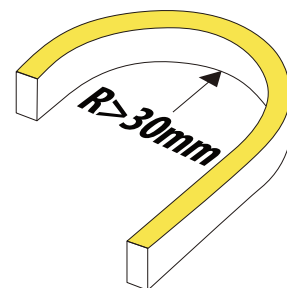


CODICE	PARAMETRI BASE						PARAMETRI FOTOMETRICI					
	Misure	Unità di Taglio	LED/mt	Input Volt	MacAdam ellipse	WaĖ	CRI	Colore Luce	Lumen nominali	Adesivo	Chip	IP
AV0050LU-E/1CUT	5000x6x12 mm	≈1cm	140	24VDC	3 Step	10W/mt	≥90	3000K	320LM/mt	3M VHB 5952	Epistar	IP67
AV0038LU-E/1CUT	5000x6x12 mm	≈1cm	140	24VDC	3 Step	10W/mt	≥90	4000K	400LM/mt	3M VHB 5952	Epistar	IP67
AV0039LU-E/1CUT	5000x6x12 mm	≈1cm	140	24VDC	3 Step	10W/mt	≥90	6000K	400LM/mt	3M VHB 5952	Epistar	IP67

**Lunghezza Flex standard 5mt, lunghezza custom da 0,1 a 20mt.
Tipologia cavo: 2x0,5mm² - 20AWG wire.



SIDE VIEW - FLESSIONE ORIZZONTALE
R > 30 mm



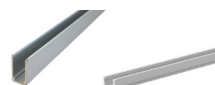
ACCESSORI:



Tappo con foro: AV0077LU-E
Tappo senza foro: AV0054LU-E



Clip di fissaggio: AV0060LU-E



Profilo 1mt alluminio: AV0268LU-E
Profilo 2mt alluminio: AV0134GLD



Forbici: AV9999LU-E