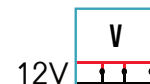


# MODULO 2 LED 0,66W 12V IP66

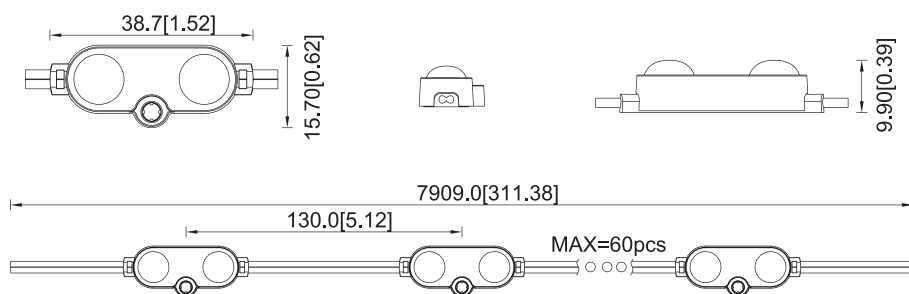
## Catena 60 moduli - Confezione 100pz



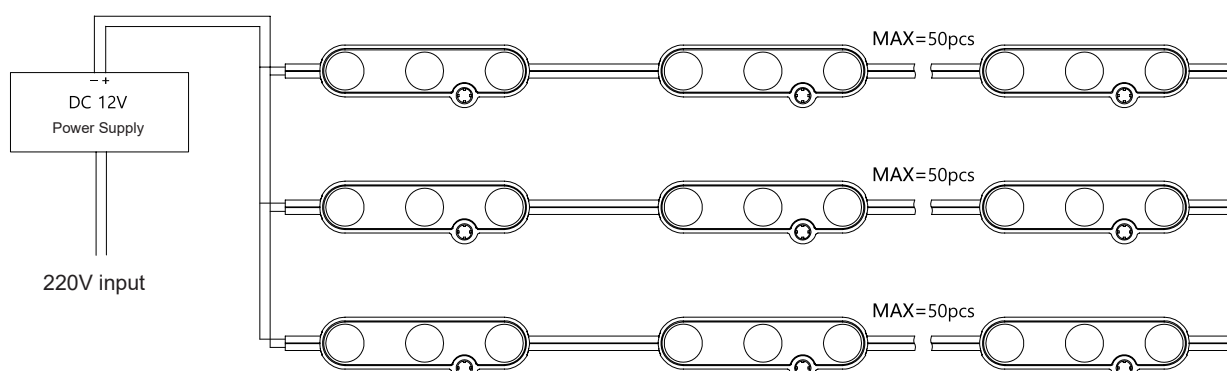
\*\*60 moduli a catena

| CODICE      | PARAMETRI BASE  |            |       |            |         | PARAMETRI FOTOMETRICI |             |                |                   |      |
|-------------|-----------------|------------|-------|------------|---------|-----------------------|-------------|----------------|-------------------|------|
|             | Misure          | Input Volt | Watt  | LED        | Adesivo | CRI                   | Colore Luce | Lumen nominali | Classe Energetica | IP   |
| AV0105BET-E | 38,8x15,7x9,6mm | 12V        | 0,66W | 2 LED 2835 | 3M      | >80                   | 6000K-6500K | 66LM           |                   | IP66 |

### DIMENSIONI



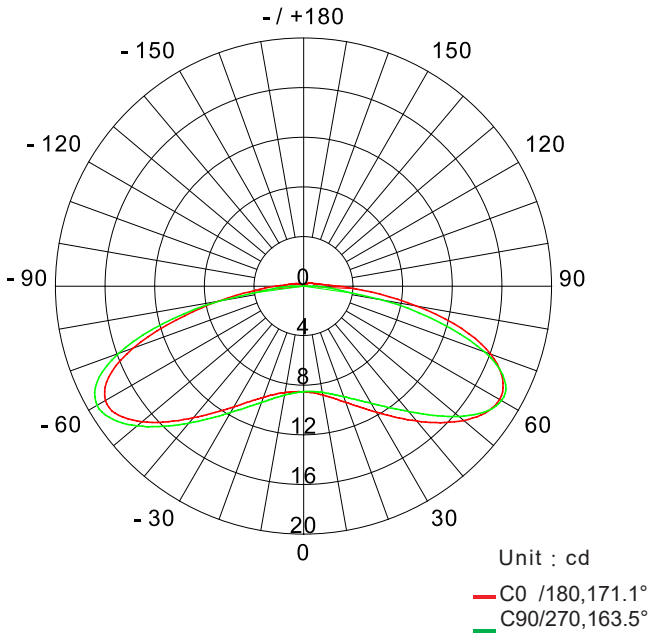
### DIAGRAMMA CONNESSIONE



# MODULO 2 LED 0,66W 12V IP66

## Catena 60 moduli - Confezione 100pz

### EMISSIONE LUMINOSA



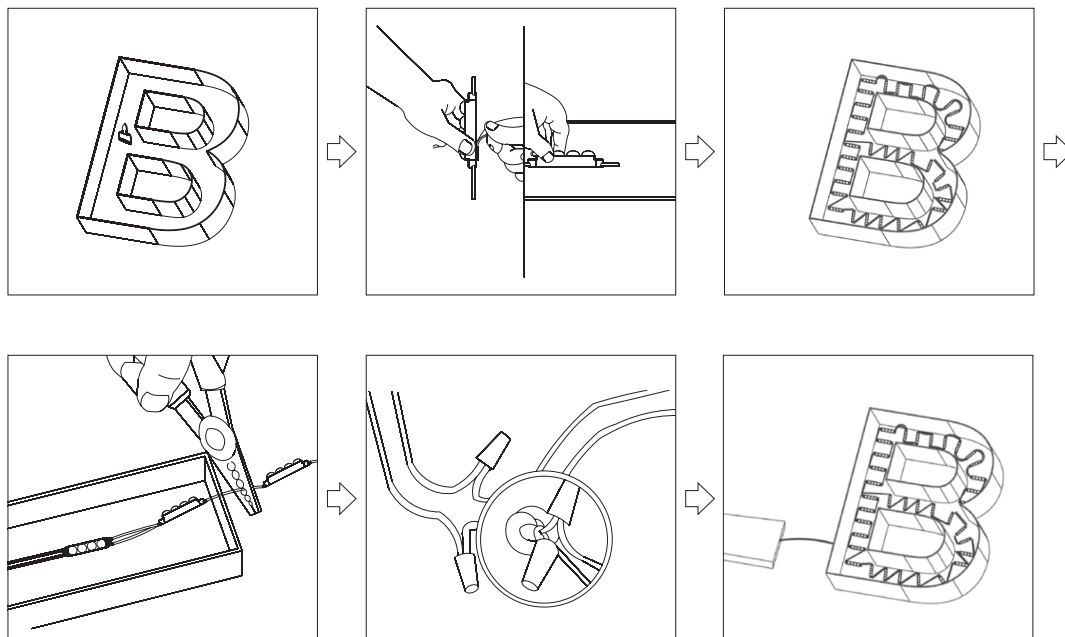
AVERAGE BEAM ANGLE(50%): 167.3°

Flux Out: 55.07lm (CCT=11000K)

|       |               |         |
|-------|---------------|---------|
| 0.02m | 8686,21436lx  | 8.81cm  |
| 0.04m | 2172,5359lx   | 17.62cm |
| 0.06m | 965,12382lx   | 26.42cm |
| 0.08m | 542,91340lx   | 35.23cm |
| 0.10m | 347,5857,4lx  | 44.04cm |
| 0.12m | 241,3595,4lx  | 52.85cm |
| 0.14m | 177,3437,5lx  | 61.65cm |
| 0.16m | 135,7334,9lx  | 70.46cm |
| 0.18m | 107,2264,6lx  | 79.27cm |
| 0.20m | 86,86,214,4lx | 88.08cm |

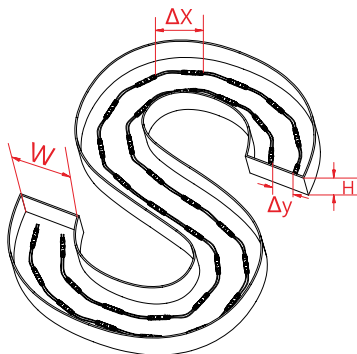
Height Eavg , Emax      Beam Angle: 131.15°      Diameter

### MONTAGGIO



# MODULO 2 LED 0,66W 12V IP66

## Catena 60 moduli - Confezione 100pz



### Fila singola

| Profondità (H) cm | Illuminazione (lux) | Font width (W) | Spazio tra 2 moduli ( $\Delta X$ ) | Spazio tra 2 moduli ( $\Delta Y$ ) | Effetto Visivo |
|-------------------|---------------------|----------------|------------------------------------|------------------------------------|----------------|
| 4.5               | 8600-10300          | 6cm            | 6cm                                | 5cm                                | OK             |
| 6                 | 3830-4720           | 11cm           | 5,5cm                              | 10cm                               |                |
| 7                 | 3010-3570           | 11cm           | 5,5cm                              | 13cm                               |                |
| 8                 | 2730-3140           | 11cm           | 5,5cm                              | 13cm                               |                |
| 10                | 1540-1820           | 16cm           | 8cm                                | 13cm                               |                |

### Doppia fila

| Profondità (H) cm | Illuminazione (lux) | Larghezza Font (W) | Spazio tra 2 moduli ( $\Delta X$ ) | Spazio tra 2 file ( $\Delta Y$ ) | Effetto Visivo |
|-------------------|---------------------|--------------------|------------------------------------|----------------------------------|----------------|
| 4.5               | /                   | /                  | /                                  | /                                | OK             |
| 6                 | 5900-6520           | 11cm               | 2,5cm                              | 13cm                             |                |
| 7                 | 4720-6730           | 11cm               | 2,5cm                              | 13cm                             |                |
| 8                 | 5390-6010           | 11cm               | 2,5cm                              | 13cm                             |                |
| 10                | 2950-3380           | 16cm               | 4cm                                | 13cm                             |                |

#### Nota:

I dati di cui sopra si ottengono quando il modulo LED utilizza un materiale di fondo bianco e una lastra acrilica da 3 mm come materiale trasparente sul fondo della scatola della lampada.