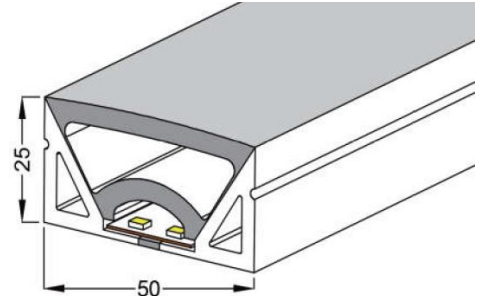
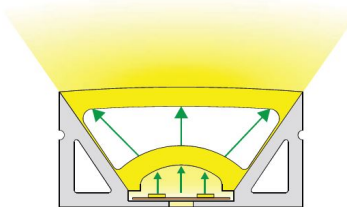
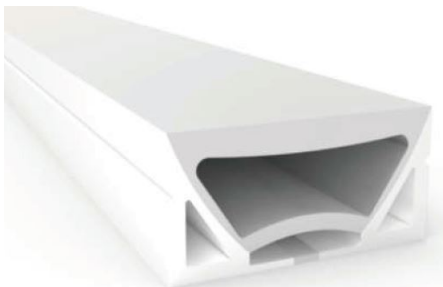
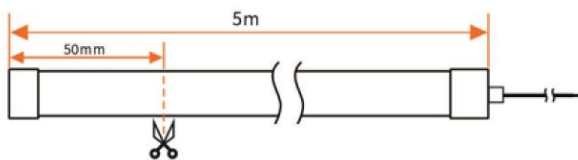


# FLEX NEON 5025 FLAT 24V IP67

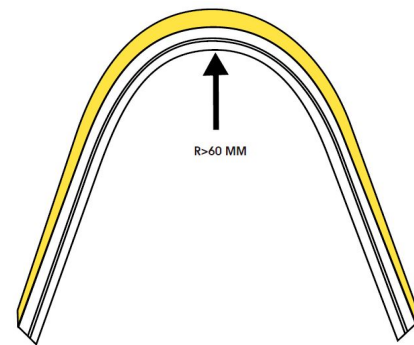


CODICE	PARAMETRI BASE						PARAMETRI FOTOMETRICI					
	Misure	Unità di Taglio	LED/mt	Input Volt	MacAdam ellipse	Watt	CRI	Colore Luce	Lumen nominali	Adesivo	Chip	IP
AV0101LU-E	1000x50x25 mm	50mm	280	24VDC	3 Step	19,2W/mt	≥82	3000K	1018~1286LM/mt	3M VHB 5952	Epistar	IP67
AV0102LU-E	1000x50x25 mm	50mm	280	24VDC	3 Step	19,2W/mt	≥82	3500K	1018~1286LM/mt	3M VHB 5952	Epistar	IP67
AV0086LU-E	1000x50x25 mm	50mm	280	24VDC	3 Step	19,2W/mt	≥82	4000K	1018~1286LM/mt	3M VHB 5952	Epistar	IP67

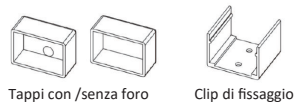
\*\*Lunghezza Flex standar 5mt, lunghezza custom da 0,1 a 10mt.  
Tipologia cavo: 2x0,5mm<sup>2</sup> - 20AWG wire.



TOP VIEW - FLESSIONE VERTICALE  
R<60 mm



ACCESSORI:



Tappi con /senza foro

Clip di fissaggio