









COLORI

-  5500K
-  4000K
-  3000K
-  2700K
-  Ambra
-  Rossa
-  Verde
-  Blu

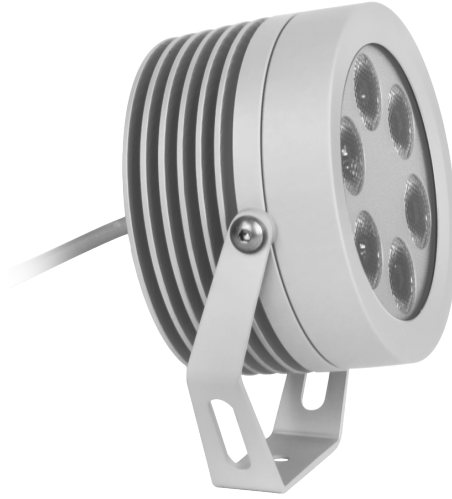
-  RGB
-  AWB
-  AWWW

780Lm (rgb,700mA)

**3000K - CRI>90 Su richiesta

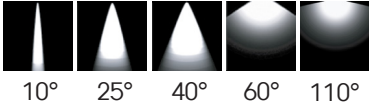
FINITURE

- Grigio 
- Nero 



CODICE: AV01005GN

OTTICHE



Diff.



Cavo 150 cm incluso
SUB4 FROST-UV 2x0,50



Potenza:
6W / 12W / 18W(RGB)



900Lm
(3000K-500mA)



Collegare in serie:
350mA / 500mA / 700mA(RGB)



CRI
>80



500
gr



EMISSIONE LUMINOSA / DIAGRAMMA CONICO

0,5	0,17	E (0°) 20905 E (C0) 9,9° 10062
1,0	0,35	E (0°) 5226 E (C0) 9,9° 2515
1,5	0,52	E (0°) 2323 E (C0) 9,9° 1118
2,0	0,70	E (0°) 1307 E (C0) 9,9° 629
2,5	0,87	E (0°) 836 E (C0) 9,9° 402
3,0	1,0	E (0°) 581 E (C0) 9,9° 279
Distanza (m)	Diametro Cono (m)	Illuminamento (lx)

— C0 - C180 (Angolo di dimezzamento: 19,8°)

DIMENSIONI

