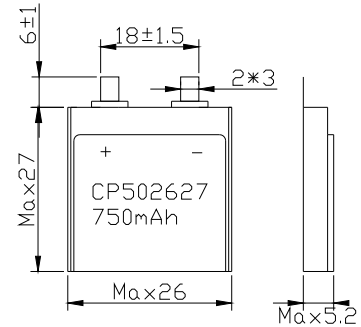
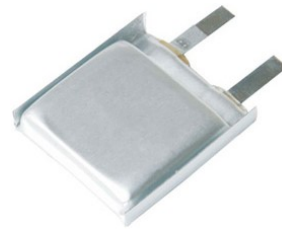


# CP502627

## Electrical characteristics

Typical values relative to cells stored for one year

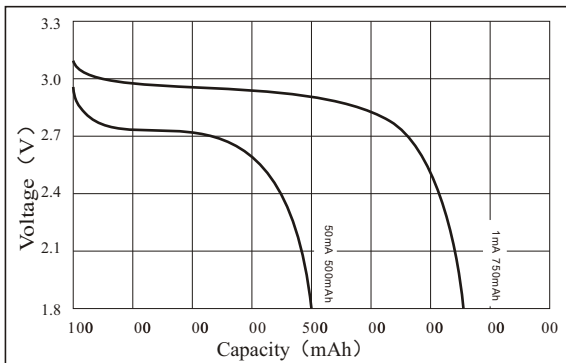
Nominal capacity (Discharged capacity at 0.5mA, +25°C, 2V cut off)	750mAh
Nominal voltage	3.0V
Max.recommended continuous current (Discharged to 2V at +25°C permitting 50% of the Nominal capacity to be achieved)	150mA
Max. Pulse current (15 seconds at 25°C drained with 50% of the nominal capacity, yield voltage reading above 2V. The value may vary with the pulse characteristics, the temperature and the cell's previous history.)	300mA
Storage	Max 30°C
Operating temperature range	-40~+60°C
Weight	≈6.5g



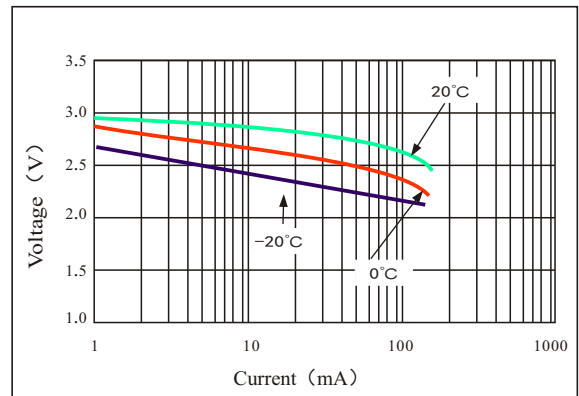
Dimensions in mm

Special terminal can be made according to customer's requirement

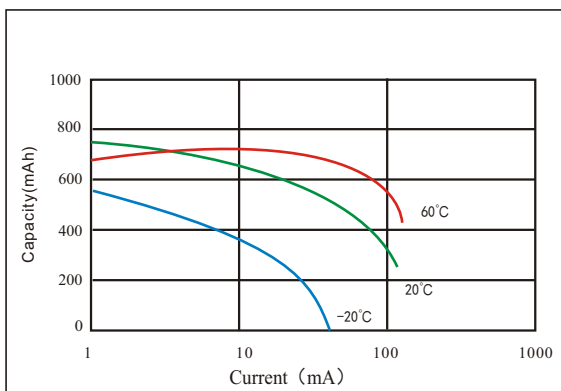
### Discharge characteristics at 25°C



### Voltage vs. Current an Temperature



### Capacity vs. current and Temperature



### Storage Characteristics

